

Efficient, cost-effective gas engine ignition module

- Economical ignition module for 1-12 cylinders
- Up to 3000 microseconds continuous spark duration
- Inductive ignition technology
- Improved combustion assists emissions reduction
- Free, easy to use Windows® based software
- Integrated 3 LED status indicator



SUMMARY

The GS12 is a feature-packed module that delivers up to 3,000 microseconds of continuous spark duration using inductive ignition technology.

GS12 is a robust, solid-state electronic module that provides highly accurate and extremely powerful inductive ignition, which when tailored with the Gill range of ignition coils, produces spark durations well in excess of any CDI ignition system.

Timing can be adjusted globally, by individual cylinder or with a set of five load-input maps that are easy to set up and customise using the Windows®-based software.

GS12 SPECIFICATION

Number of cylinders	1 - 12
Power	12 / 24V DC, 5 Amp
Spark energy / duration	500 to 3000 µSeconds continuous spark duration
Maximum RPM	4000
Timing	Global, individual cylinder, dual fuel
Timing maps	2D - speed and timing or 3D - speed, timing and load with 5 maps
Trigger methods	Single pickup, existing OEM disc and pickup, A3 or A5 conversion kit, GM® distributor timing kit, drilled flywheel pattern for wasted spark on 4 stroke, or for 2 stroke engines
Software	Windows® Based - available in multi-level security versions - basic to advanced
Programming	File set-up, save, send, store. Configuration files can be saved, or emailed
Logging	Verification and troubleshooting - files can be emailed for additional review by support staff
Communications	RS 232, DB 9 female connection
Features	Tach output signal, shutdown ground, fuel valve sequencing
Visual features	3 integrated LED lights that confirm proper operation
Application	All horsepower and engine sizes - low speed or high speed, up to 2 coils per cylinder
Environmental	-40° to +90°C sealed to IP67

> More information at gillsc.com

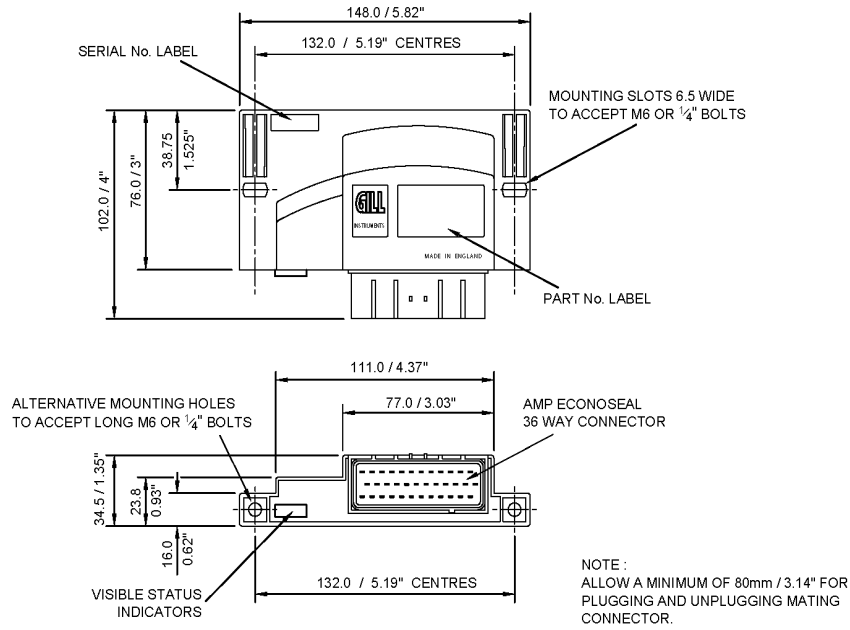
E support@gillsc.com

T +44 (0)1590 613900

GILL

Sensors & Controls

DIMENSIONS



TYPICAL SYSTEM INSTALLATION

